



**AN IATF 16949
CERTIFIED COMPANY**



**MANUFACTURER
& EXPORTER OF
GRADED C.I & DUCTILE IRON
CASTING PRODUCTS**



Total Plant Area
75,000 Sq.Feet



INTRODUCTION

EVEREST Technocast is manufacturer & exports of Four Wheeler, Three-Wheeler, Trailer Parts, Truck Parts, Tractor Parts, Auto Parts and Engine Parts & Agriculture items in India.

EVEREST Technocast has grown steadily to become a leading Casting components Supplier to OEMs & OESs operating in India. We have with design, development and manufacturing capability that matches global standards in quality and safety.

EVEREST Technocast is manufacturers of Various Cast Iron Auto Components like Brake Disc, Brake Drum, Fly wheel, Wheel Hub, Truck suspension Equilizer, Steering Nuckle, Hanger Sacal & Packer, Ball-Valve, Coupling, Bearing Housing & Pedestal, Alternator Brackets, Leaf Spring Pad, Flange, Motor Body and many others.

MISSION STATEMENT

Full fill the India's requirement with specific standard & quality, Increasing production & constantly with improvement in quality level.

Believe in innovation, best quality & ensuring the best performance by providing additional features to the product & service.

Fulfilling responsibility towards Social Ethics.

VISION STATEMENT

To be the India's Leading manufacturer of Graded Casting Components.



PLANT CAPACITY

- Total Good Casting Per Month: 1500 MT
- Total Liquid Metal per Month: 2000 MT
- Current Production per Month: 800 MT
- Current Spare Capacity per Month: 700 MT



IN HOUSE DEVELOPMENT

In our R&D division a team of top casting experts and highly qualified production engineers work closely through in-house cooperation.

They focus on technical details, contribute their extensive know-how, expertise and valuable experience, and strive for continuous innovation, in all aspect of the entire industrial process from metallurgy to marching. And the team R&D is engaged is continuous development of new product and design.



CORE SHOP

- 01.** Fully Automazed Sand transfer & Sand preparation Plant.
- 02.** No. of Cold Box Core Shooters: 10 Nos.
- 03.** Single Switch operate Sand Preparation device.
- 04.** Core Capacity upto 30 Kg Core.
- 05.** Core Sand Storage- 60 MT
- 06.** HMI controlled dosing system for Chemical addition.
- 07.** Customized production data storage facilities in all machines.

Sand Plant Make: Shree Sakthi

Machine Make: CFM Engineers

FOUNDRY DIVISION

In the foundry mechanical lines represent the excellence of casting program, including sand mixing, core-making, molding, melting and pouring. We are providing Ductile & Grey Cast Iron in accordance with various required material specification.

A cross the whole process of casting production, a complete measurement is adopted for quality control, encompassing spectrum analysis, metallographic examination, hardness and tensile strength test, thus the inner quality of every casting part is strictly monitored and guaranteed.



MELTING CAPACITY

MEDIUM FREQUENCY TRI-TRACK
INDUCTION FURNACES.

Induction Furnace- 2000KW/ 750 KG
Tri-Trak

Melting Capacity - 4000 Kg Of Molten
Metal Per Hour.

Make: Inductotherm (India) Ltd.



INDIA'S FIRST TWO STATION MOLDING MACHINE

Make- Tokyo - Japan

Box Size- 508 mm x 610 mm

Capacity- 200 Molds/hour

Mold Cycle time- 18 Sec

Core Setting time- 09 Sec

HIGH PRESSURE MOLDING LINE

No. of Mold in Line- 45 Molds

Cooling Time- 55 Mins

Box Size- 508 mm x 610 mm

Mold Cycle time- 18 Sec



FULLY AUTOMIZED SAND PLANT

Sand Plant Capacity- 40 MT prepared sand/hour.

Mixture Capacity- 500 Kg

No. of Mixture- 02 Nos.

Total Sand Storage- 180 MT

Fully Automatized addition of New Sand, Bentonite, Lustrous Coal, and water.



ONLINE SMART COOLER FOR MOLDING SAND

- Cooler capacity is 30 MT sand per hour.
- Temperature can be controlled automatically.
- Fully automatized controlling system based on HMI defined parameters.
- It can control moisture by auto water spray dosing system.



UNIVERSAL TESTING MACHINE

A universal testing machine (UTM), also known as a universal tester, materials testing machine or materials test frame, is used to test the tensile strength, elongation and compressive strength of materials.

M.P.I TEST MACHINE

Magnetic particle Inspection (MPI) is a non destructive testing (NDT) process for detecting surface and slightly subsurface discontinuities in ferromagnetic materials such as iron, nickel, cobalt, and some of their alloys. The process puts a magnetic field into the part.



VACUUM EMISSION SPECTROMETER

Optical emission spectrometry involves applying electrical energy in the form of spark generated between an electrode and a metal sample, whereby the vaporized atoms are brought to a high energy state within a so-called "discharge plasma". For chemical testing (21 elements).



ROCKWELL HARDNESS TESTER

The Rockwell scale is a hardness scale based on indentation hardness of a material. The Rockwell test determines the hardness by measuring the depth of penetration of an indenter under a large load compared to the penetration made by a preload.

CE METER

Principal of Operation:

Thermal Analysis is the interpretation of cooling curve of liquid iron sample. First arrest point, the liquidus is a temperature level is directly related to Carbon Equivalent. (online chemical testing for liquidmetal) $CE = \%C + \%Si/3$.



MICROSCOPE WITH IMAGE ANALYZER

Fully Automatic Structure analysis of castings like type-A structure in C.I. and nodularity, nodule counts in SG. Iron castings.



QUALITY CONTROL

All Products are produced in its own foundry and manufacturing bases, under active and operative quality management system certified by ISO 9001 : 2015.

In acknowledgement of one stop lean production from casting to finishing. We have a modern technology and also strict technical specification and complete quality control procedure.

In our company every single product is completely qualified by a standard instrument and equipment

TESTING DETAILS

INCOMING RAW MATERIALS TESTING

- PIG IRON- C, SI, MN., S, P, CU.
- LUSTER COAL – VM, ASH, FC-TESTING BY MUFFEL FURNACE
- SCRAP – C, SI, MN., S, P, CU...
BENTONITE POWDER- SWELLING CAPACITY, MB
- VALUE, GCS, WTS ...
- CARBON, SULPHUR TESTING BY USE OF CARBON- SULPHUR APPRATUS.
- SI., MN, IS TESTING USING CHEMICAL SOLUTIONS.

MANUFACTURING PROCESS TESTING

- FULLY EQUIPED INHOUSE SAND TESTING LAB WHICH HAS MOISTURE TESTER, GCS, WTS, PERMEABILITY TESTER AND MANY MORE.
- MOISTURE TESTER- TO TEST MOISTURE OF SAND.
- GCS-TO CHECK GREEN SHEAR STRENGTH OF MOLDIN SAND.
- VM, LOI TESTING BY MUFFEL FURNACE AND OVEN.
- ACTIVE CLAY SAND TEST BY MB TEST.

CASTING INSPECTION

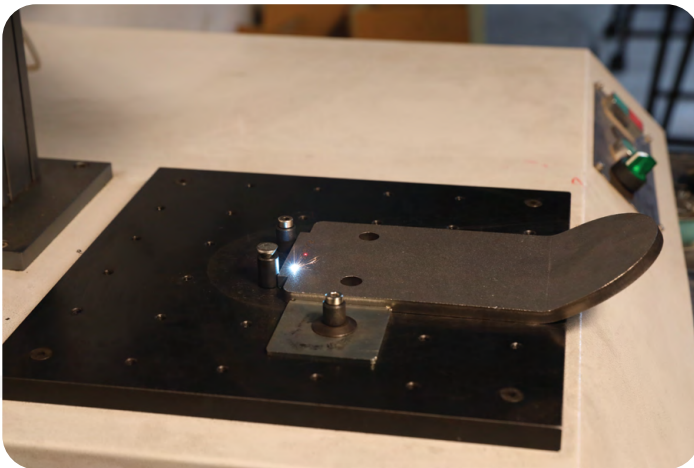
- ROCKWELL HARDNESS TESTER TO CHECK HARDNESS OF CASTING.
- VERNICIER CALIPER, HEIGHT GUAGE, MICROMETER TO CHECK DIMENTIONS OF CASTINGS.
- MPI (CRACK DETECTION)
- UTM(TO CHECK TENSILE, ELONGATION)
- FULLY AUTOMISED MICROSCOPE WITH IMAGE ANALYSER.

MELTING

- PYROMETER- TO CHECK TEMPRATURE OF MOLTEN METAL
- AMETEC LASER GUN TO CHECK INSTANT TEMPRATURE RESULT.
- CEMETER-TOCHECKC, SI., OF MOLTEN METAL.
- SPECTROMETER TO TEST 28 ELEMENTS IN METAL.

MACHINING FACILITIES

- CNC : 350X250 MM to 430X500 MM
- VTL : 500x500 mm
- VMC : 710X510X510 mm
- VMC : 510X510X510 mm
- VMC : 400X500X500 mm
- LATHE : 1450X650 mm
- LASER MARKING MACHINE : 400X160 mm



CERTIFICATION

ISO 9001:2015 Quality Management System by TUV
Rhineland Registration Number – 85 100 001 21019



D & B
Certified



Lean
Certified



DUST COLLECTOR & FUME EXTRACTOR SYSTEM

- 01.** 11 points of suction for collection of dust in sand plant.
- 02.** 3 Points of Fume collection over all three crucibles.
- 03.** Dust Collector capacity- 42000 m³/hr.
- 04.** Fume Extractor Capacity- 15000 m³/hr.
- 05.** Make- Techflow



OVERVIEW

Quality System ISO 9001 and modern machinery stock guarantee parameters repeatability.

In order to make our casting quality more sophisticated different kind of research and works are being done especially in the area of testing for metal & microstructure. Fast development of export in our company allows to believe that our products of high quality and standard which confirms the activeness of our offer. It especially refers to Indian automotive market which is pretty demanding.

Total control of our product, from castings to machining, guarantees the highest quality standards. In addition a single in-group source allows the company to offer its customers flexibility and reliability of supply.

Organization is one of the different types of graded castings manufacturers in the automotive industry, Construction equipment, Hydraulic application parts, Agriculture casting parts, Railway parts and many more optimum product at the optimum price.

PRODUCTS

AUTOMOBILE INDUSTRIES

Brake Caliper

Slack Adjuster

Flywheel

Pressure Plate

Face Plates

Case Transmission

TRACTOR PARTS

Differential Case

Cover Housing

Brake Plate

Brake Cover

Brake cum bearing housing

Flywheel Housing

VALVE INDUSTRIES

Butterfly Valve

Valve Body

Handwheel

Steam trap Valve

HYDRAULIC CYLINDER PARTS

Piston

Gland

Cushion Ring

AGRICULTURE PARTS

Roller Rings

Light Counter weights

Link housing

CUSTOMIZED CASTING PARTS

Post Tensioning Guide

Bearing Housing

Counter weight

Dead Weight

Bell Housing & Much More

MATERIAL GRADE WE ARE DOING

Cast Iron Material Grades

| Country | Standard | Comparison - Equivalent Grades of Grey Iron (Grey Cast Iron) | | | | | | | | |
|------------------|------------------------|--|---------------|----------------|------------------|------------|------------------|------------|------------|----------------|
| ISO(2004) | ISO 185/JL/ | 100 | 150 | 200 | 225 | 250 | 275 | 300 | 350 | - |
| Australia(2007) | AS 1830 | 100 | 150 | 200 | 225 | 250 | 275 | 300 | 350 | 400 |
| USA* | ASTM A48 ^a | - | 150(NO.20/25) | 200(NO. 30) | | 250(NO.35) | | 300(NO.45) | 350(NO.50) | 400(NO. 55/60) |
| | ASTM A126 ^a | - | CLASS A | CLASS B | | | | CLASS C | | |
| Germany Austria | DIN 1691 | GG10 | GG15 | GG20 | | GG25 | | GG30 | GG35 | GG40 |
| European | EN 1561 | EN-GL-100 | EN-GJL-150 | EN-GJL-200/225 | | EN-GJL-250 | | EN-GL-300 | EN-GL-350 | |
| China | GB 9439 | HT100 | HT150 | HT200 | | HT250 | | HT300 | HT350 | - |
| Japan | JIS G5501 | FC100 | FC150 | FC200 | | FC250 | | FC300 | FC350 | - |
| Italy | UNI 5007 | G10 | G15 | G20 | | G25 | | G30 | G35 | - |
| France | NG A32-101 | - | FGL150 | FGL200 | | FGL250 | | FGL300 | FGL350 | FGL400 |
| UK ^b | BS 1452 ^a | 100 | 150 | 200 | | 250 | | 300 | 350 | - |
| India | IS 210 | - | FG150 | FG200 | | FG260 | | FG300 | FG350 | FG400 |
| Spain | UNF | - | FG15 | FG200 | | FG25 | | FG30 | FG35 | - |
| Belgium | NBN 830-01 | FGG10 | FGG15 | FGG20 | | FGG25 | | FGG30 | FGG35 | FGG40 |
| Sweden | SS 14 01 | O110 | O115 | O120 | | O125 | | O130 | O135 | O140 |
| Norway | N11 100 | SJG100 | SJG150 | SJG200 | | SJG250 | | SJG300 | SJG350 | - |
| SAE ^c | J431 ^a | - | G9H12 | G10H18 | G12H21 G11H18 | G11H20 | G12H21 G13H19 | G13H22 | G13H24 | - |

S.G Iron Material Grades

| Country | Standard | Comparison - Equivalent Grades of Ductile Iron (SG Iron, Nodular Graphite Iron) | | | | | | | | |
|-----------------|----------------------|---|---------------|-----------------------|--------------|-----------|-----------------------|--------------|--------------|--------------|
| ISO | ISO 1083/JS/ | 400-15/S | 400-18/S | 450-10/S | 500-7S | 500-10/S | 600-3/S | 700-2/S | 800-2/S | 900-2/S |
| Australia(2007) | AS 1831 | 400-15 | 400-18 | 450-10 | 500-7 | | 600-3 | 700-2 | 800-2 | 900-2 |
| USA* | ASTM A395 | | 60-40-18 | 200(NO. 30) | | | | 300(NO.45) | 350(NO.50) | |
| | ASTM A536 | | | 60-42-10/ 65-45-12 | 70-50-05 | | 80-60-03/ 80-55-06 | 100-70-03 | 120-90-02 | - |
| Germany Austria | DIN 1693 | GGG40 | | - | GGG50 | | GGG60 | GGG70 | GGG80 | - |
| European | EN 1563 | EN-GJS-400-15 | EN-GJS-400-18 | EN-GJS-450-10 | EN-GJS-500-7 | | EN-GJS-600-3 | EN-GJS-700-2 | EN-GJS-800-2 | EN-GJS-900-2 |
| China | GB 1348 | | QT400-18 | QT450-10 | QT500-7 | | QT600-3 | QT700-2 | QT800-2 | QT900-2 |
| Japan | JIS G5502 | FCD400 | | FCD450 | FCD500 | | FCD600 | FCD700 | FCD800 | - |
| Italy | UNI 4544 | GS370-17 | | GS400-12 | GS500-7 | | GS600-2 | GS700-2 | GS800-2 | - |
| France | NF A32-201 | FGS370-17 | | FGS400-12 | FGS500-7 | | FGS600-2 | FGS700-2 | FGS800-2 | - |
| UK | BS 2789 ^d | 400/17 | | 420/12 | 500/7 | | 600/7 | 700/2 | 800/2 | 900/2 |
| India | IS 1865 | SG370/17 | | SG400/12 | SG500/7 | | SG600/3 | SG700/2 | SG800/2 | - |
| Spain | UNF | FGE38-17 | | FGE42-12 | FGE50-7 | | FGE60-2 | FGE70-2 | FGE80-2 | - |
| Belgium | NBN 830-02 | FNG38-17 | | FNG42-12 | FNG50-7 | | FNG60-2 | FNG70-2 | FNG80-2 | - |
| Sweden | SS 14 07 | 0717-02 | | - | 0727-02 | SS 140725 | 0732-03 | 0737-01 | 0864-03 | - |
| Norway | NS11 301 | SJK-400.3 SJK-400 | | - | SJK-500 | | SJK-600 | SJK-700 | SJK-800 | - |

ADI Casting Material Grades

Mechanical Properties measured on test pieces from separately cast samples.

| Material Symbol | Number | Tensile Strength N/mm2 (min) | 0.2% Proof Stress N/mm2 (min) | Elongation % (min) |
|-----------------|-----------|------------------------------|-------------------------------|--------------------|
| EN-GJS-800-8 | EN-JS1100 | 800 | 500 | 8 |
| EN-GJS-1000-5 | EN-JS1110 | 1000 | 700 | 5 |
| EN-GJS-1200-2 | EN-JS1120 | 1200 | 850 | 2 |
| EN-GJS-1400-1 | EN-JS1130 | 1400 | 1100 | 1 |

Refer To Relevant Standard For Full Details

CMM

At EVEREST TECHNOCAST, we take immense pride in delivering cutting-edge solutions for precision measurement and quality control. Today, we're thrilled to showcase our latest innovation: the state-of-the-art Contour Measurement Machine!

Accurate Dimension Checking:

With the Contour Measurement Machine, you can bid farewell to measurement uncertainties! Our advanced technology allows for precise and reliable dimension checking of various components, ensuring they meet the strictest quality standards.

Unleashing Efficiency:

Say goodbye to tedious manual measurements! Our Contour Measurement Machine streamlines the inspection process, boosting productivity and efficiency in your production line. Stay ahead of the competition with faster turnaround times!

Elevate Quality Control:

Quality is the bedrock of success, and we're committed to helping you achieve excellence. With our Contour Measurement Machine, you can maintain consistency and ensure every product leaving your facility is of the highest quality.

Don't settle for anything less than perfection when it comes to measurement and quality control. Choose MotionTech for highest quality components .



CONTOURE

At EVEREST TECHNOCAST, we take immense pride in delivering cutting-edge solutions for precision measurement and quality control. Today, we're thrilled to showcase our latest innovation: the state-of-the-art Contour profile Measurement Machine!

Accurate Dimension Checking:

With the Contour profile Measurement Machine, you can bid farewell to measurement uncertainties! Our advanced technology allows for precise and reliable dimension checking of various components, ensuring they meet the strictest quality standards.

Unleashing Efficiency:

Say goodbye to tedious manual measurements! ☐☐ Our Contour Measurement Machine streamlines the inspection process, boosting productivity and efficiency in your production line. Stay ahead of the competition with faster turnaround times!

Elevate Quality Control:

Quality is the bedrock of success, and we're committed to helping you achieve excellence. With our Contour Measurement Machine, you can maintain consistency and ensure every product leaving your facility is of the highest quality.

Don't settle for anything less than perfection when it comes to measurement and quality control. Choose MotionTech for highest quality components .



MPI

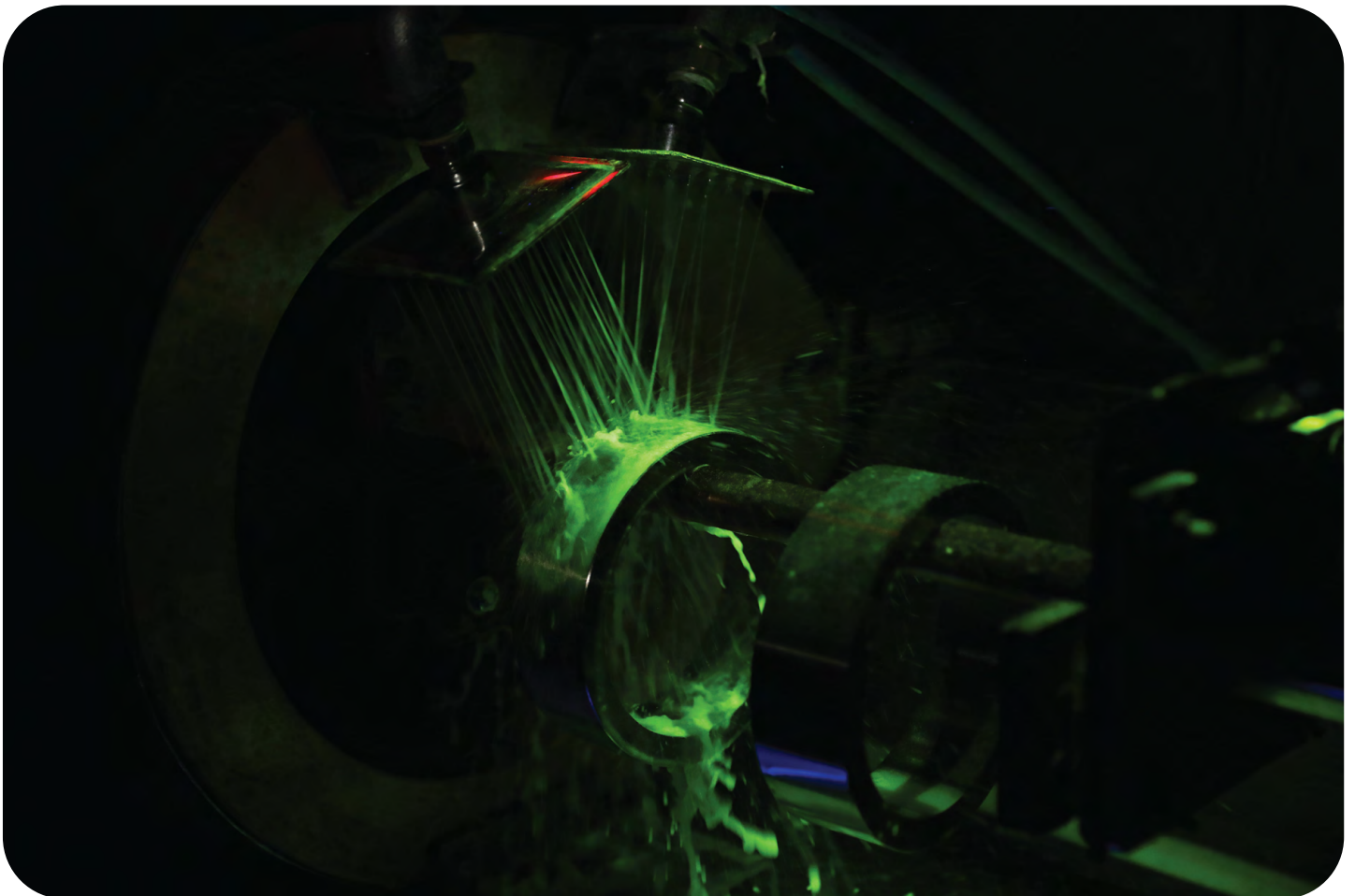
Ensuring Auto Parts Quality: EVEREST TECHNOCAST's MPI Testing!

At Motiontech Solution LLP, we prioritize precision and safety in our automotive parts. With Magnetic Particle Inspection (MPI) testing, we ensure top-notch quality, detecting flaws that enhance performance and reliability.

Advantages

- 01.** Precise Defect Detection
- 02.** Cost-Effective Solutions
- 03.** Fast and Reliable Process
- 04.** Enhanced Customer Safety

Choose Everest Technocast for auto parts that exceed industry standards. Join us in driving excellence in the automotive sector!



Products We Serve in Various Industries



Products We Serve in Various Industries





Thank You



Survey No.26, Akash Industrial park,
Opp.Bharat Petrol Pump, At-Biliyala,
Ta-Gondal , Dist-Rajkot



+(91) 9429500725



info@everesttechnocast.com